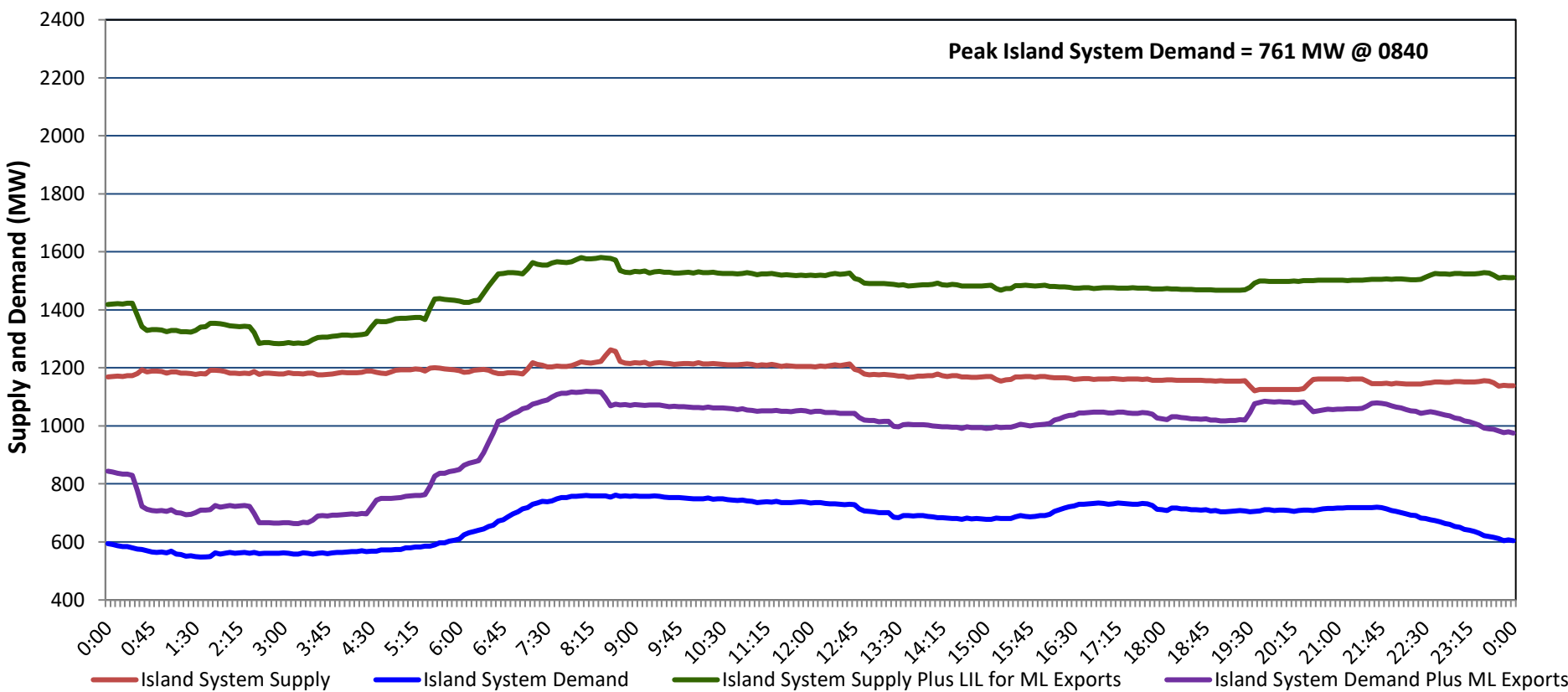


Newfoundland Labrador Hydro (NLH)
Supply and Demand Status Report Filed Tuesday, June 03, 2025

Section 1
Island Interconnected System - Supply, Demand & Exports
Actual 24 Hour System Performance For Monday, June 02, 2025



Island Supply Notes For June 02, 2025

- A As of 0800 hours, March 30, 2025, Holyrood Unit 3 unavailable due to planned outage 130 MW (150 MW).
B As of 0823 hours, March 31, 2025, Bay d'Espoir Unit 1 unavailable due to planned outage (76.5 MW).
C As of 0823 hours, March 31, 2025, Bay d'Espoir Unit 2 unavailable due to planned outage (76.5 MW).
D As of 1543 hours, May 03, 2025, Holyrood Unit 2 available but not operating 115 MW (170 MW).
E As of 0800 hours, May 04, 2025, Holyrood Unit 1 unavailable due to planned outage (170 MW).
F As of 0851 hours, May 05, 2025, Hardwoods Gas Turbine unavailable due to planned outage (50 MW).
G As of 1538 hours, May 16, 2025, Holyrood Diesels available at 8 MW due to forced derating (10 MW).
H As of 0852 hours, May 27, 2025, Bay d'Espoir Unit 3 unavailable due to planned outage (76.5 MW).
I As of 0852 hours, May 27, 2025, Bay d'Espoir Unit 4 unavailable due to planned outage (76.5 MW).
J As of 1527 hours, May 26, 2025, St. Anthony Diesel Plant available at 7.85 MW due to forced derating (9.7 MW).
K At 1140 hours, June 02, 2025, Hawkes Bay Diesel Plant available at 2.5 MW due to forced derating (5 MW).

Section 2
Island Interconnected System - Supply, Demand & Outlook

Tue, Jun 03, 2025	Island System Outlook ²	Seven-Day Forecast	Island System Daily Peak Demand (MW)	
			Forecast ⁸	Adjusted ⁶
Island System Supply: ⁴ NLH Island Generation: ^{3,7} NLH Island Power Purchases: ⁵ NP and CBPP Owned Generation: LIL/ML Net Imports to Island: ⁹	1,171 MW 775 MW 90 MW 210 MW 96 MW	Tuesday, June 3, 2025	780	730
		Wednesday, June 4, 2025	745	695
		Thursday, June 5, 2025	755	705
		Friday, June 6, 2025	775	725
		Saturday, June 7, 2025	750	700
		Sunday, June 8, 2025	785	735
7-Day Island Peak Demand Forecast:	885 MW	Monday, June 9, 2025	885	835

Island Supply Notes For June 03, 2025

- L At 0717 hours, June 03, 2025, Cat Arm Unit 1 unavailable due to planned outage (67 MW).

Notes: 1. Generation outages for running and corrective maintenance are included. These are not unusual for power system operations. They generally do not impact customer supply. Hydro schedules outages to system equipment whenever possible to coincide with periods when customer demands are low and sufficient supply reserves are available. However, from time to time equipment outages are necessary and reserves may be impacted.
2. As of 0800 Hours.
3. Gross continuous unit output.
4. Gross output from all Island sources (including Note 3).
5. NLH Island Power Purchases include: ML Imports, Exploits Generation, Rattle Brook, Star Lake, Wind Generation and capacity assistance (when applicable).
6. Adjusted for interruptible load and the impact of voltage reduction when applicable.
7. Due to limitations inherent in the design of combustion turbines, the output of combustion turbines may be reduced in the event that ambient temperatures exceed the threshold required for full rated output. This threshold is dependent on the design of each turbine.
8. Does not include ML Exports.
9. LIL Import sunk in the Island System. Actual LIL flows will be restricted by various system conditions including, but not limited to, Island Load, ML Exports and Avalon Unit status.

Section 3
Island Peak Demand and Exports Information
Previous Day Actual Peak and Current Day Forecast Peak

Mon, Jun 02, 2025	Island Peak Demand ¹⁰	8:40	761 MW
	Exports at Peak		314 MW
	LIL Net Imports to Island		984 MWh
Tue, Jun 03, 2025	Forecast Island Peak Demand		780 MW

Notes: 10. Island Demand is supplied by NLH generation and purchases, LIL Imports plus generation owned and operated by Newfoundland Power and Corner Brook Pulp & Paper (Deer Lake Power, DLP).